



Eden Medical Center

A Sutter Health Affiliate

Directory *of* Services

2010-11

With You. For Life.

Table of Contents

Welcome.....	3
Important Phone Numbers.....	3
Birthing Center	4
Breast Health.....	6
Cancer Care Services.....	7
Cardiopulmonary Services	8
Community Health Education	9
Diabetes Services.....	10
Emergency Care/Trauma Center	11
Gastroenterology Services	11
Hospital Services/Visiting Eden Medical Center	12
Imaging & Radiology Services.....	14
Laboratory Services	15
Nutrition Counseling.....	15
Neuroscience Center.....	16
Orthopedic Services.....	18
Otolaryngology (ENT)	18
Philanthropy & Volunteering	19
Rehabilitation Services.....	20
Psychiatric Services	22
Senior Health Services	23
Support Groups.....	24
Surgical Services.....	25
Women’s Health Services.....	26
Physician Roster.....	27
Map and Directions	30
Sutter Medical Center Castro Valley	31

Welcome

For more than 55 years, Eden Medical Center has been providing high-quality and compassionate health care to our community. We have made incredible advancements over the decades and continually strive to improve the patient experience.

As we look forward to the completion of the construction of our new hospital, we will enter into this new era of health care in our community with the same dedication to outstanding patient care and innovative medical technology.



“BETTER-THAN-AVERAGE” CRANIOTOMY SURVIVAL RATE

California State Office of
Statewide Health Planning
and Development
2007

CANCER PROGRAM ACCREDITATION with 7 commendations

American College of Surgeons
for the Commission on Cancer
February 2009

BREAST IMAGING CENTER OF EXCELLENCE

American College of Radiology
February 2009

CERTIFICATE OF EXCELLENCE

California Hospital
Assessment & Reporting
Taskforce (CHART)
October 2009

CLINICAL PERFORMANCE EXCELLENCE, PATIENT SAFETY EXCELLENCE & INNOVATION

VHA
November 2009

SISCO INCENTIVE PROGRAM AWARD – EXCEPTIONAL ACHIEVEMENT FOR THE OXYTOCIN PROJECT

Sutter Health
December 2009

Important Phone Numbers

Administration

(510) 727-2703

Admitting/Registration

(510) 889-5000

Auxiliary (Volunteers)

(510) 889-5080

Billing Inquiries

(510) 889-5018

Chaplain/Spiritual Care

(510) 537-1234 x1619

Community Health Education

(888) 445-8433

Concerns, Comments, Grievance

(510) 727-2712

Emergency Department

(510) 889-5015

Financial Counselor

(510) 889-5069

Foundation (Philanthropy)

(510) 889-5033

Gift Shop

(510) 889-5081

Hospital Operator

(510) 537-1234

Human Resources

(510) 727-8260

Laboratory Services

(510) 889-5036

Medical Records

(510) 889-5065

Outpatient Surgery

(510) 727-2725

Patient Information/Inquiries

(510) 537-1234

Public Relations

(510) 728-1630

Radiology/Imaging Center

(510) 889-5052

Rehabilitation Services

(510) 618-1800

Social Work Services

(510) 728-1614

Can't find the number you need? Call the hospital operator at (510) 537-1234.

Birthing Center



Eden Medical Center's Birthing Center was designed with private rooms and showers, a home-like atmosphere in each room, and enhanced services to provide a comfortable and healing environment for patients and families.

Our team of highly-trained, professional and devoted doctors and nurses work together to provide the best possible birth experience for you.

Pediatric Hospitalists

Moms and dads will have peace of mind knowing that our in-hospital pediatricians are available around the clock for newborn exams and care.

Neonatal Intensive Care Unit (NICU)

When the start of life requires specialized care for baby, you have a dedicated health care team in the Neonatal Intensive Care Unit to provide the medical and nursing care your baby needs.

Online OB Registration

We offer convenient online registration so we can anticipate your arrival and quickly admit you when you are in active labor. Just visit edenmedcenter.org/services/maternity.html.

If you have questions about registering or admissions, contact the Admitting Department at (510) 889-5000.

Tours of The Birthing Center

This free tour gives you a preview of the labor and delivery suites, nursery and post-partum rooms. English and Spanish tours are available. **For a schedule of upcoming tours, please call (888) 445-8433.**

Financial Counseling Services

Eden Medical Center offers financial counseling services to assist you in understanding your insurance coverage, including when and how to apply for benefits, and to suggest a range of options to help you meet the financial obligations associated with the birth of your child. **For more information about Financial Counseling, please call (510) 889-5069.**



Classes and Support Groups

We offer a wide range of classes and support groups to help you and your family prepare for your new arrival. Our classes are led by experienced health and childbirth educators and professional staff from the medical center. **For a schedule of upcoming classes, please visit www.edenmedcenter.org or call (888) 445-8433.**

Monthly Pregnancy Forums

Take advantage of the opportunity to meet with Eden's physicians, nurses or other health care professionals. Forums occur the first Monday of each month and covers topics such as:

- Transitioning as New Parents
- Prenatal Care and Fetal Development
- Car Seat Safety
- "Your Shiny New Baby"

Prenatal and Childbirth Education

We offer a wide range of classes to help you and your family prepare for your new arrival. Classes include:

- Childbirth Preparation
- Breastfeeding Basics
- Baby Care
- Infant CPR

Breastfeeding Support Group

Join other new moms in this supportive and caring group to share your breastfeeding challenges, advice, and triumphs. The group meets every Tuesday at 10:30 a.m. **For more information, please call (888) 445-8433.**

Classes in Spanish

Eden Medical Center offers childbirth classes and Birthing Center tours in Spanish. **For more information, please call (888) 445-8433.**

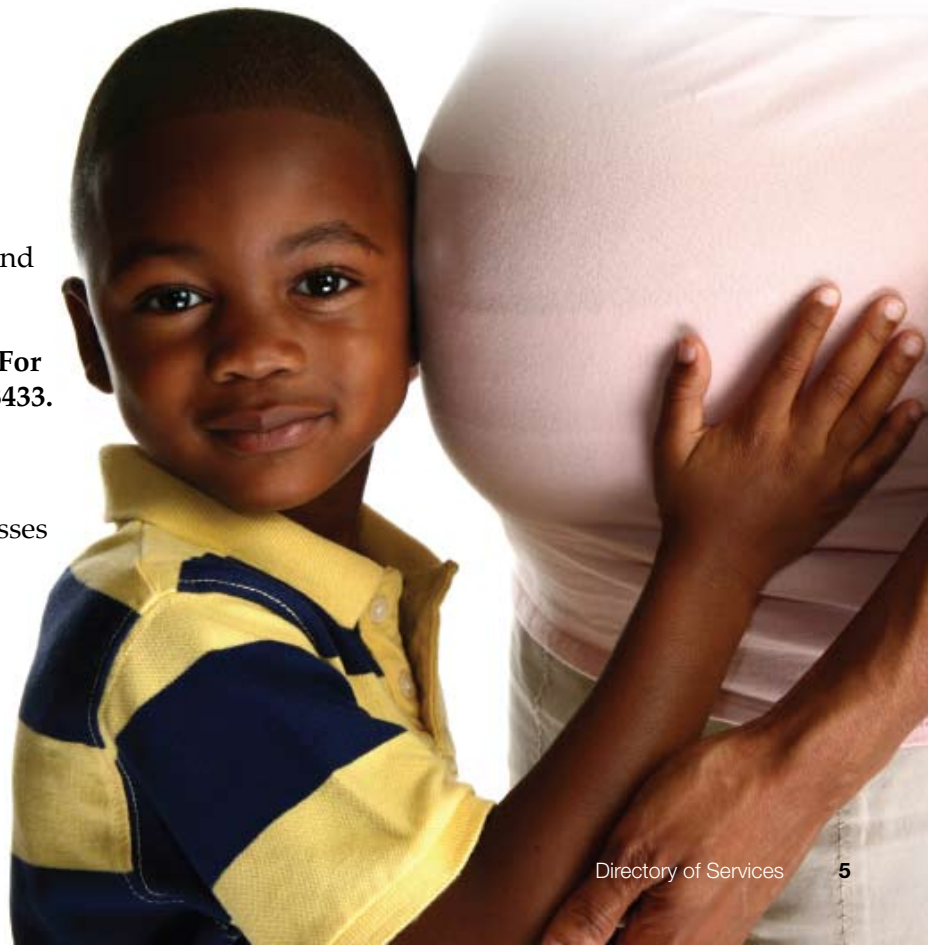


Learn More!

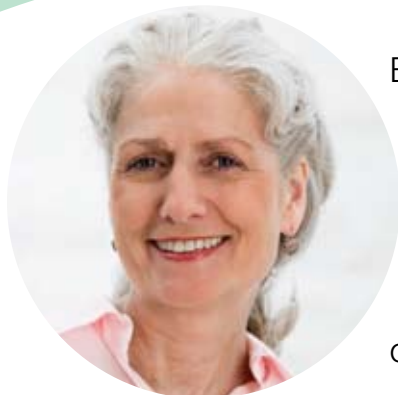
For more information about healthy pregnancy and childbirth, visit our extensive **Online Health Library** at **www.edenmedcenter.org**.



To find an Eden Medical Center obstetrician or pediatrician, or for a complete schedule of upcoming classes and support groups, visit **www.edenmedcenter.org** or call **(888) 445-8433**.



Breast Health



Eden Medical Center is the only Breast Imaging Center of Excellence in Southern Alameda County. Eden earned this honor from the American College of Radiology (ACR) by meeting ACR's rigorous standards for voluntary breast imaging accreditation programs and requiring technologists and radiologists to verify their experience in breast imaging and complete continuing education.

For information on treatments available for breast and other cancers, please see "Cancer Care Services" on the next page.

Mammography

Eden offers full field digital mammography with Computer Aided Detection (CAD) for both screening and diagnostic exams. We are the only hospital in the East Bay that is a designated "Breast Imaging Center of Excellence" by the American College of Radiology. **Women should obtain a doctor's order first, then make an appointment by calling the Imaging Center at (510) 889-5044.**

Stereotactic & Ultrasound Guided Breast Biopsy

When the abnormal area in the breast is too small to be felt, we use special 3-D imaging or ultrasound to pinpoint the suspicious areas and help guide the radiologist's instrument in the breast so that tissue samples may be withdrawn with a needle. These procedures are especially useful when the abnormality can be seen on a mammogram, but cannot be felt. A biopsy is a procedure to retrieve a tissue sample to determine whether a breast lump is benign (of no danger to health) or malignant (a threat to health). **For more information about breast biopsy, contact the Imaging Center at (510) 889-5044.**

Breast Cancer Support Group

Facilitated by a licensed psychologist, this ongoing, weekly group is for women diagnosed with breast cancer. This confidential group addresses issues such as treatments, changes in self image, the impact on loved ones, and work life. The group meets Thursdays from 5:30 to 7 p.m. **An initial phone assessment is required prior to joining the group. Please contact Social Work Services at (510) 728-1614.**

Women's Health Symposium

This annual event features our physicians and other clinical professionals discussing the latest news and medical breakthroughs in women's health. Visit our Web site for announcement of the next symposium.



Learn More!

For more information about breast health, visit our extensive **Online Health Library** at www.edenmedcenter.org.



To find an Eden Medical Center physician, call **(888) 445-8433**, or visit www.edenmedcenter.org.



Cancer Care Services

Eden Medical Center's team of experts use the latest imaging technology to detect even the earliest signs of cancer. We provide the most advanced treatments and a multidisciplinary approach to care to help our patients face the tough challenges ahead.

In 2009, our comprehensive cancer program was recognized with distinction by the American College of Surgeons for the Commission on Cancer with seven commendations.



Early Detection and Diagnosis

We use state-of-the-art imaging technology, including digital mammography and PET/CT system optimized for cancer care to diagnose and localize cancer faster than ever before.

Advanced Cancer Treatments

Available treatments include three-dimensional conformal radiation therapy, intensity modulated radiation therapy, nuclear medicine, and a range of surgical interventions.

Lymphedema Clinic

The Lymphedema Clinic provides consultation, evaluation, and hands-on therapies for those with edema (swelling). Treatment consists of manual lymphatic drainage, compression bandages or garments, exercise, skin care, and education. **For more information, contact the Lymphedema Clinic at (510) 618-1804.**

Research

Our Tumor Registry tracks the health status of patients, furthering scientific review of patient care protocols and analysis of trends, and developing optimum standards of care.

Programs for Patients

"Facing the Challenges of Living with Cancer" is a bi-monthly series of workshops for anyone

who has been touched by cancer. Topics include the life-changing effects of cancer, how to communicate with loved ones, and more. **For a schedule of topics and meeting dates, contact (888) 445-8433.**

Support groups facilitated by licensed clinicians specializing in cancer care provide specific support for cancer patients and their families. **For more information contact Social Work Services at (510) 728-1614.**

The **Look Good, Feel Better** program shows women how to use cosmetics, wigs and scarves to help them feel better about themselves on the outside and on the inside. Sponsored by the American Cancer Society (ACS). **For more information, contact the ACS at (800) 227-2345.**



Learn More!

For more information about cancer, visit our extensive **Online Health Library** at www.edenmedcenter.org.



If you would like to visit Eden Medical Center's Cancer Library, please call **(510) 728-1675** for more information or to make an appointment.



To find an Eden Medical Center physician, call **(888) 445-8433**, or visit www.edenmedcenter.org.

Cardiopulmonary Services



Eden Medical Center offers a variety of programs and services to help you keep your heart and lungs healthy.

EdenFit Fitness Program

EdenFit is a supervised exercise program ideal for those who have just completed cardiac or pulmonary rehabilitation, and for those with a health condition such as cardiovascular disease, obesity, high blood pressure, diabetes or arthritis.

EdenFit is located in the San Leandro Surgery Center at 15035 East 14th Street, San Leandro, CA 94578. **For more information, contact EdenFit at (510) 317-8334.**

Cardiac Stress Testing

Eden Medical Center provides a full range of cardiac diagnostics, including EKG, EEG, echocardiograms, stress testing and Holter monitoring. **For more information, contact Cardiology at (510) 889-5073.**

Pulmonary Laboratory

Eden's pulmonary laboratory provides pulmonary function testing and pulmonary exercise studies. **For more information, contact the Pulmonary Lab at (510) 889-5073.**

Respiratory Therapy

Our Respiratory Therapy Department provides the full range of diagnosis and treatment, including blood gas analysis and ventilator management. We treat all patients from neonates to adults.

Hyperbaric Oxygen Therapy

Hyperbaric Oxygen Therapy is a medical treatment that exposes a patient to controlled pressures of 100 percent oxygen for a prescribed period of time, usually from 60–180 minutes. This treatment increases the amount of oxygen in the patient's blood being delivered to the organs and tissues in the body, which works to promote the healing process. Approved uses for Hyperbaric Oxygen Therapy include carbon monoxide poisoning, improved wound healing, crush injury, decompression sickness, selected problem wounds, exceptional blood loss, intracranial abscess, certain soft tissue infections, skin grafts and flaps, and thermal burns. **For more information about Hyperbaric Oxygen Therapy, contact the Respiratory Therapy Department at (510) 727-8226.**



Learn More!

For more information about heart or lung health, visit our extensive **Online Health Library** at www.edenmedcenter.org.



To find an Eden Medical Center physician, call **(888) 445-8433**, or visit www.edenmedcenter.org.



Community Health Education

Eden Medical Center is committed to improving the health and well-being of our community and offers a full range of health and wellness classes, lectures, support groups, and community events for the entire family. Being proactive about your health and your family's health begins with being well informed. Most classes are free and online registration is available. **For more information, call (888) 445-8433 or visit edenmedcenter.org.**



Health Classes

Eden Medical Center offers a wide range of health classes throughout the year to help you understand how education and prevention of diseases play important roles in maintaining good health.

CPR Classes

CPR classes include Heartsaver, Basic Life Support for Healthcare Providers, and Infant CPR.

Pregnancy, Birth & Parenting Classes

Classes to help you and your family prepare for your new baby. See page 5 for more information.

Physician Forums

Get the latest medical information about a variety of disorders from our own Eden doctors, and have the opportunity to ask questions.

Support Groups

We understand that quality health care often requires more than just diagnosing and treating the illness or injury. We know that support and education are also important to help our patients and their families to understand and cope with the challenges they face. See page 24 for a complete list of support groups offered at Eden Medical Center.

Speakers Bureau

We provide onsite health education opportunities to service and senior groups, businesses, churches and schools. **For more information, contact Community Health at (510) 728-1675.**

Community Outreach and Events

Eden Medical Center regularly participates in community events and health fairs. **For more information, call Community Health at (510) 728-1675.**

Run to the Lake and Health Expo

A signature event for more than 10 years, the Run to the Lake's 5k/10k race and Health Expo draw more than 2,000 people each July. Visit www.edenmedcenter.org for more information about the event or to volunteer.



Learn More!

For more information about your health, visit our extensive **Online Health Library** at www.edenmedcenter.org.



For a complete schedule of upcoming classes, forums, support groups, or community events, visit www.edenmedcenter.org or call **(888) 445-8433**.



Diabetes Services



If left unchecked and uncontrolled, diabetes can lead to serious health complications and even death. It is important for people who have diabetes or who have a loved one with the disease, to understand it and learn how to control the condition through counseling, education and the support of others.

One-on-One Diabetes Counseling

Eden Medical Center offers counseling for those who need an individualized treatment program. A physician referral is required. **For more information, contact Diabetes Services at (510) 537-1234 x4452.**

Managing Diabetes Class

Learn the keys to living well with diabetes. This two-part class offers a better understanding of the different types of diabetes, how insulin works, healthy eating and reading food labels, monitoring blood glucose, medications and insulin injections, and other resources.

For information and dates, please call (888) 445-8433.

Diabetes Support Group

A support group plays an important role for families and people with diabetes by offering emotional support and feedback on the day-to-day challenges that diabetics may face. The Diabetes Support Group meets the second Saturday of every month at 1 p.m. **For more information, please call (510) 728-1675.**

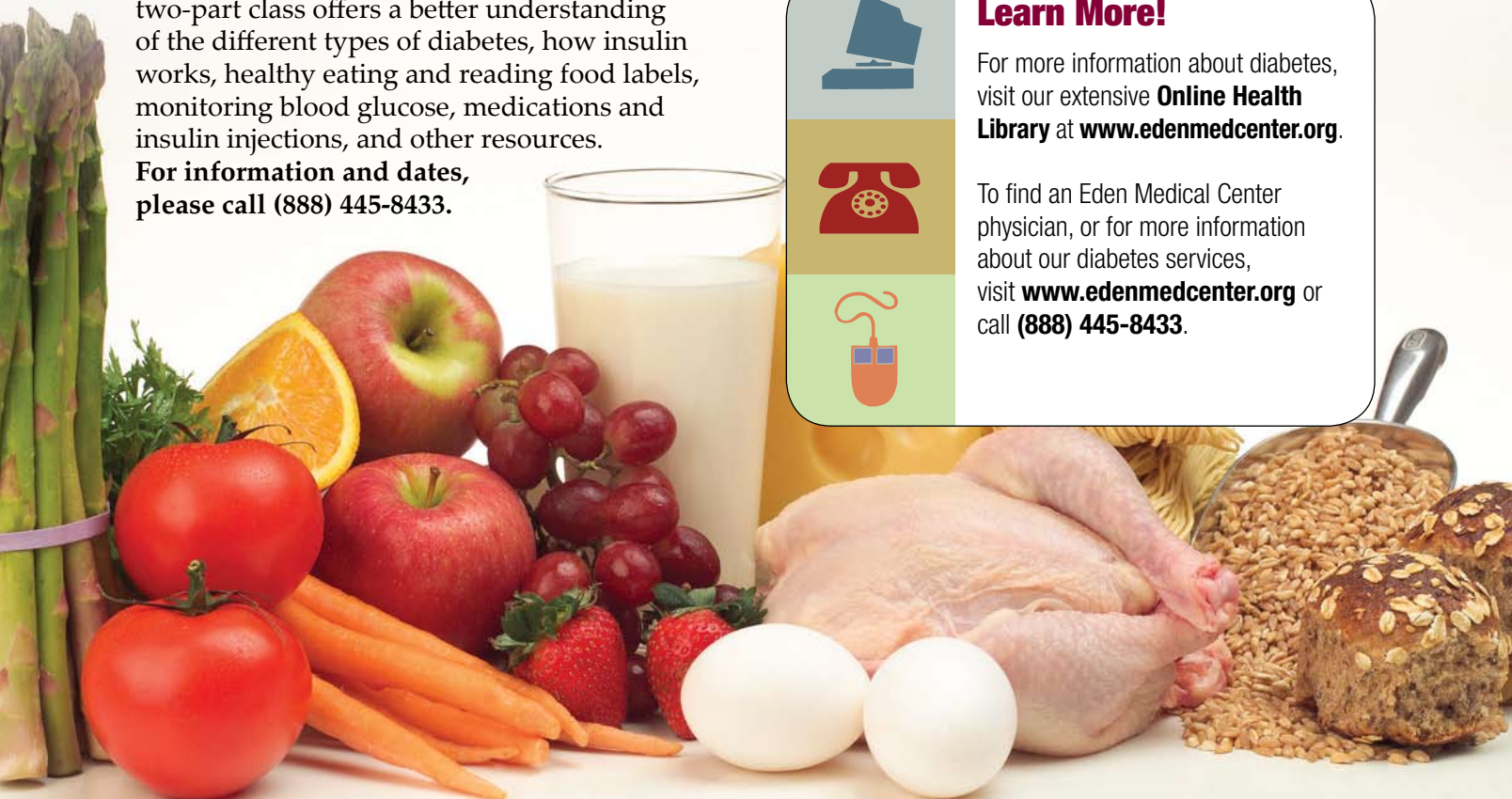


Learn More!

For more information about diabetes, visit our extensive **Online Health Library** at www.edenmedcenter.org.



To find an Eden Medical Center physician, or for more information about our diabetes services, visit www.edenmedcenter.org or call **(888) 445-8433**.



Emergency Care/Trauma Center

Eden Medical Center provides a 24-hour emergency room and is the regional trauma center for Southern Alameda County.



Emergency Department

If you have a life-threatening emergency, call 9-1-1 immediately. The Emergency Department treats patients with complex and serious emergent conditions. **Contact the Emergency Department at (510) 889-5015.**

FastTrack

FastTrack is located in the Emergency Department and treats patients requiring urgent care but are not serious emergent situations (lacerations, sprains, headaches, flu symptoms). Open daily from 10:00 a.m. to 1:00 a.m.

Trauma Center

With a first responder's call to the Trauma Center, a team of specially-trained medical professionals quickly prepares to treat the most seriously injured patients who arrive by ambulance or helicopter.

Gastroenterology Services

Eden Medical Center offers advanced diagnosis and treatment of diseases and disorders of the gastrointestinal tract, liver, gallbladder and pancreas.

Diagnostics and Treatment

Eden Medical Center's gastroenterology services use state-of-the-art technology to diagnose and treat a variety of routine and complex gastrointestinal conditions. Diagnostic services include endoscopy, ultrasound, and fluoroscopy.



Learn More!

For more information about gastrointestinal health, visit our extensive **Online Health Library** at www.edenmedcenter.org.



To find an Eden Medical Center physician, call **(888) 445-8433**, or visit www.edenmedcenter.org.



Hospital Services/Visiting EMC



Whether you have an outpatient procedure, an extended hospital stay, or just visiting, we want your time with us to be safe, smooth and comfortable. Below are some of the services and visitor guidelines at Eden to help you plan your visit.

Advanced Health Care Directives

The Advance Healthcare Directive is a legal document that allows you to appoint someone to speak on your behalf in the event of a medical emergency. **For more information, contact Social Work Services at (510) 728-1614.**

Case Management/Discharge Planning

Every inpatient at Eden Medical Center is given a discharge plan to help you and your family prepare for the end of your hospital stay and for the care you will need after you leave.

Cell Phones

Cell phone use is restricted in some areas of the hospital—please be aware of posted signs or ask a staff member.

Disabled Access

Eden Medical Center is committed to providing access to all patients and visitors with disabilities. The main entrances to the hospital are wheelchair accessible, and accessible restrooms are available in many areas. **If you require special accommodations, please call the Compliance Office at (510) 727-2712.**

Financial Counseling

Eden Medical Center offers financial counseling services to assist patients and their families

in understanding insurance coverage, how to apply for benefits, and the options available to help you meet the financial obligations associated with your medical treatment. **Contact Financial Counseling at (510) 889-5069.**

Gift Shop

The hospital Gift Shop is open Monday-Friday, 11:00 a.m. to 5:00 p.m., weekends from 1:00-4:00 p.m., and is located on the first floor near the main lobby. Visitors can purchase flowers, gift items, cards, magazines, snacks and sundries. The Gift Shop is operated by the Eden Medical Center Auxiliary.

Hand Hygiene

Hand hygiene is the best defense against infections. To help protect our patients from infection, all visitors should thoroughly wash their hands. If hands are not visibly soiled, use the alcohol-based foam located on the walls throughout the hospital.

Language Interpreters

We value the rich cultural heritage of our patient population and recognize that English may not be a patient's primary language. Eden Medical Center provides language interpreters by telephone 24 hours a day to ensure that information is clearly communicated.

Medical Records

You have a right to access your medical records, and to have your records (or a portion of your records) released to another party. You can download and print the forms necessary to access your medical records from our Web site at www.edenmedcenter.org or call (510) 889-5065.

Medication Safety

Eden Medical Center has taken a big step to protect patients from medication errors. Through an advanced computerized bar coding system known as eMap, physicians and nurses can track drug orders and make the delivery of patient medications even safer. Sutter Health is the first health care network in Northern California to use this advanced technology.

Physician Referral Service

You can search for a doctor who is affiliated with Eden Medical Center online at www.edenmedcenter.org or call (888) 445-8433. Search for a doctor using criteria that are important to you, such as location, specialty, gender, health plans accepted or languages spoken.

Smoke-Free Campus

Smoking is not permitted anywhere in the hospital. Please use designated smoking areas outside the hospital. These areas are clearly marked and are located at least 20 feet away from any entrance to the buildings.

Spiritual Care Services

Eden Medical Center provides the services of a hospital chaplain, who can provide spiritual guidance, read from scripture, talk through a difficult decision, provide a sacrament, anointing or blessing, and prayer. There is also a Meditation Room on the first floor adjacent to ICU. **Contact the Spiritual Care Coordinator to arrange for a visit at (510) 537-1234, ext. 1619.**

Valley Café (Cafeteria)

The Valley Café and a 24-hour beverage/snack room are located on the ground floor. The Valley Café is open Monday–Friday from 7:30 a.m. to 6:30 p.m. Saturday, Sunday and holidays from 8:15 a.m. to 6:30 p.m. The salad and soup bar is open everyday starting at 10:30 a.m.

Visiting Hours

Eden Medical Center encourages family participation in our patient's care and healing process with an open visitation policy. This means that we have unrestricted visiting hours. However, there may be special circumstances that require some restrictions on this policy. In addition, there may be times when staff may request visitors leave the patient's bedside for a limited time. We appreciate your support in promoting a quiet, healing and restful environment by respecting the needs and privacy of our patients. Visiting children must be supervised by a responsible adult, other than the patient, at all times. Please thoroughly wash your hands before and after visiting.

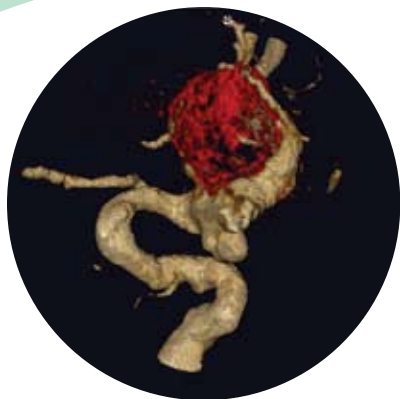
Visiting in Critical Care Areas

The visiting hours in our critical care units (ICU, CCU and Neuro ICU) vary due to the health status of the patient. In general, visiting hours are allowed at the discretion of the patient's nurse. Flowers, plants and food (i.e., fruit baskets) are not allowed in critical care units. Visitors who are ill should not visit the critical care area.

Wireless Internet Access

Eden Medical Center provides free wireless internet service to patients and families from their personal laptop computers. Laptops configured with internal wireless capabilities automatically search for available networks. You will be given instruction on how to connect to this service upon your admittance to Eden. This service is available from patient rooms, the main lobby, and the cafeteria.

Imaging & Radiology Services



Eden Medical Center uses state-of-the-art imaging and radiology technology to diagnose and treat a variety of illnesses and conditions. **To reach Imaging & Radiology, please call (510) 889-5052.**

Bone Densitometry

Bone densitometry measures calcium content (density), mainly in the spine and hip, and measures both central and peripheral bone density.

Computed Tomography

A computed tomography (CT) scan combines x-rays with computer scans to produce detailed pictures of soft tissue, organs and bones.

Digital Radiography

Digital radiography is a form of x-ray imaging, where digital X-ray sensors are used instead of traditional photographic film, allowing for digital transfers and enhancement of images.

Fluoroscopy

Fluoroscopy uses continuous beams of X-rays to evaluate structures and movement within the body, such as blood vessels or digestive tract.

Interventional Radiology

Services include CT- and Ultrasound-guided biopsies and drainages, angiography, and embolizations.

Mammography

Eden Medical Center is an American College of Radiology Breast Imaging Center of Excellence

and has FDA-approved full field digital mammography.

Magnetic Resonance Imaging

Magnetic resonance imaging (MRI) uses a magnetic field and pulses of radio wave energy to provide pictures of organs and structures inside the body.

Neurointerventional

Our biplane neurointerventional unit produces 3-D images used for angiography, treating brain aneurysms, advanced treatment of stroke, and embolization of brain tumors.

Nuclear Medicine

Nuclear medicine is used to check the health of your internal organs and bones, as well as blood flow through the muscle or heart walls.

PET/CT Scan

A PET/CT scan provides a merged picture of both the body's function and anatomy into one image, with more sensitivity, speed, resolution, and diagnostic confidence.

Ultrasound

Ultrasound uses sound waves to form pictures of your internal organs. In pregnant women, it is used to check the condition of the fetus.

Laboratory Services

The Clinical Laboratory at Eden Medical Center is a full-service, Joint Commission-accredited clinical laboratory. It's directed by a board-certified Medical Director and staffed by licensed laboratory scientists and other highly trained staff, including certified phlebotomists.



The Laboratory is equipped with state-of-the-art computer information systems and automated analyzers. It serves the medical center as well as physicians' offices in the surrounding areas. The services provided include routine blood and other body fluid testing, microbiology testing, transfusion service, and pathology service. The laboratory also manages Point-of-Care testing throughout the medical center.

The laboratory's business hours for outpatient are: Monday – Friday from 7:30 a.m. to 5:00 p.m.; Saturday and Sunday from 8:30 a.m. to 2:00 p.m.; closed on holidays.

For more information, call the Lab at (510) 889-5036.

Nutrition Counseling

Food and nutrition play an important role in maintaining good health and preventing disease, such as heart disease, cancer and diabetes. Eden Hospital's Nutrition Services Department offers individual outpatient nutritional assessment, counseling, and follow-up.



Eden Medical Center offers nutrition counseling for a variety of diseases including diabetes, cardiac health, obesity/weight reduction, hypertension, and kidney dysfunction, as well as many other diagnoses with special nutritional needs.

Special attention is paid to individual lifestyle and needs based on physician's referral. You will have the opportunity to review your current eating habits and food intake with the

registered dietitian, and you will come away with a comprehensive dietary plan and information. A physician's referral is required.

For appointments and more information about our nutritional counseling service, call the Department of Food & Nutritional Services at (510) 537-1234, ext.5233.

Neuroscience Center



Designated as Sutter Health's center of excellence for neurological care for the East Bay region, the Sutter East Bay Neuroscience Center (SEBNC) provides the most advanced medical and surgical care using minimally invasive techniques for the treatment of brain tumors, vascular disorders, movement disorders, and spinal and peripheral nerve problems.

Neurosurgical Care

Advances in neurosurgery have brought hope to hundreds of patients with brain and spinal injuries or disease. Interactive image-guided surgical equipment allows our neurosurgeons to perform intricate surgery with minimal invasion.

In addition, the installation of the revolutionary O-arm imaging system provides neurosurgeons with real-time, 3-D, multi-plane images while the patient is still in surgery.

The benefits of minimally-invasive, image-guided surgery for patients are phenomenal. The surgical incision area is small, and the impact on healthy tissue is reduced, resulting in less trauma, less pain and less risk for infection. Patients are healing faster, with greater comfort, better outcomes, and returning home to normal activities faster than ever before.

Neurointerventional Program

Neurointerventional care uses microcatheters, similar to cardiac catheters but smaller, in minimally invasive procedures to diagnose and treat vascular diseases in the brain. Eden's neurointerventional suite specifically diagnoses and treats aneurysms, vascular stenosis, stroke, and other major neurological diseases.

Neurointerventional technology allows for more comprehensive views of neurovascular structures. It also reduces the amount of trauma to the brain and radiation exposure to the patient.

Until recently, open surgery was often the only option for conditions such as aneurysms, vascular disease and tumors in the brain. However, breakthrough developments in medicine now make it possible for these same conditions to be treated with neurointerventional procedures.

The neurointerventional suite also represents an interdisciplinary approach as the neurointerventionalist works closely with the neurosurgeon, anesthesiologist, primary care physician and radiologist to develop the optimal treatment plan for each individual seen for neurointerventional services.

Neuro-Oncology Program

The Neuro-Oncology Program provides advanced treatment for tumors involving the nervous system including the brain and spine. Utilizing a coordinated, interdisciplinary team approach, neurosurgeons, medical oncologists, radiation oncologists, and neuro radiologists develop an optimum treatment approach to meet the unique needs of each individual treated.

Stroke Program

Stroke is the number one cause of disability and the third leading cause of death in the United States today.

A stroke—or “brain attack”—occurs when



Additionally, persons may experience a transient ischemic attack (TIA), a “mini stroke” with stroke-like symptoms, but without the long-term limitations. These patients can greatly decrease their risk for a serious episode in the future through interventions available at Eden Medical Center.

Spine Program


Back pain doesn’t just affect your activities, it affects your life. Most people experience significant, persistent back or neck pain at least once in their lifetime. The causes range from degenerative conditions, ruptured discs, or congenital abnormalities, to repetitive movements or a single traumatic event.


The Spine Program can treat all types of spine conditions. Utilizing minimally invasive surgeries, complex and reconstructive surgery, spinal disc arthroplasty, disc replacement technology, kyphoplasty for osteoporosis fractures, and spine tumor surgery, the neurosurgical team offers the latest array of advanced surgical techniques to get you back into the swing, and back into your life.

a blood clot blocks an artery or a blood vessel breaks, interrupting blood flow to an area of the brain. When either of these events occurs, brain cells begin to die, which can lead to permanent brain damage.

Identifying and treating a stroke within the first few hours after onset increases the chances a stroke patient will recover.


Use the F.A.S.T. method, as illustrated below, to recognize the warning signs of stroke. If you observe any of these signs, it’s critical that you call 9-1-1. The Sutter East Bay Neuroscience Center at Eden Medical Center provides the specialized care needed for patients who have had a stroke.

 Sutter East Bay Neuroscience Center At Eden Medical Center		Is it a stroke? Think FAST! 1-877-527-2467 www.edenmedcenter.org
F	ACE	<ul style="list-style-type: none"> • Uneven smile or expression, facial droop, numbness in face
A	RM	<ul style="list-style-type: none"> • One arm drifts down, weakness & numbness
S	PEECH	<ul style="list-style-type: none"> • Slurred, inappropriate words, mute, strange speech
T	IME	<ul style="list-style-type: none"> • Time is critical, call 9-1-1.




Learn More!

For more information about neurological or spine health, visit our extensive **Online Health Library** at www.edenmedcenter.org.



To find an Eden Medical Center physician, or for more information about the Sutter East Bay Neuroscience Center, visit www.edenmedcenter.org or call **(888) 445-8433**.



Use the F.A.S.T. method to recognize the warning signs of stroke and seek immediate treatment if you suspect someone is having a stroke.

Orthopedic Services



Eden Medical Center offers the latest in minimally invasive surgery and equipment to treat patients experiencing pain in their bones and joints. Our goal is to help our patients reach the highest level of pain-free functioning possible.

Our Orthopedic Services

Our renowned orthopedic surgeons provide:

- Joint Replacement
- Spine Surgery
- Hand Surgery
- Sports Medicine

Physical Therapy and Rehabilitation

Following surgery, our Outpatient Rehabilitation Services offer a full range of physical and occupational therapy and support. See page 20 for more information.



Learn More!

For more information about bone or joint health, visit our extensive **Online Health Library** at www.edenmedcenter.org.



To find an Eden Medical Center physician, call **(888) 445-8433**, or visit www.edenmedcenter.org.



Otolaryngology (ENT)

Sinus Surgery

Sinusitis, an inflammation of the sinuses, is one of the most common health conditions in the United States. Symptoms include nasal congestion, fatigue, headaches, chronic post-nasal drip, recurring sinus infections, and sinus polyps.

In 1999, Eden Medical Center was one of the first hospitals in the East Bay to use image-guided surgery in the treatment of sinusitis, and also offers minimally invasive balloon sinuplasty.



Learn More!

For more information about health of the ear, nose or throat, visit our extensive **Online Health Library** at www.edenmedcenter.org.



To find an Eden Medical Center physician, call **(888) 445-8433**, or visit www.edenmedcenter.org.



Philanthropy & Volunteering

Established in 1982, the mission of the Eden Medical Center Foundation is to provide financial support to Eden Medical Center. Through the generosity of patients, members of the community, our physicians and staff, corporations and foundations, we have raised nearly \$10 million for much-needed programs, services and equipment to ensure continued excellence in patient care.



Capital Campaign

In August 2009, the Foundation completed a feasibility study and will soon conduct a \$12.8 million Capital Campaign. The campaign will support equipment and technology enhancements in the new hospital.

Physician & Nurse of the Year Awards

Great health care begins with great doctors and nurses. Each year, our patients have the opportunity to honor their doctor or nurse by nominating them for the Doctor and Nurse of the Year Award. **For a nomination form, call the Foundation at (510) 889-5033.**

Partners in Caring

Partners in Caring are a select group of donors who contribute a minimum of \$250 in cumulative gifts to the Foundation each year. Their generosity makes them a vital link to the Eden community.

Dr. Mary Jane Stamm Legacy Society

The Legacy Society recognizes individuals who have shown extraordinary generosity and interest in Eden Medical Center and have included Eden in their estate plans. There are many ways to include Eden Medical Center in your estate plans including: wills, bequests, charitable remainder trusts and gifts of real property.

Events

The Foundation supports community health events like the Women's Health Symposium and Senior Flu Clinic. In addition, it hosts two special events to raise funds: the Spring Gala in May and Day on the Green golf tournament in September.

Ways to Give

Eden Medical Center Foundation is a 501(c)(3) non-profit organization. All gifts to the Foundation are tax deductible to the fullest extent allowed by the law. The Foundation accepts gifts of cash (cash, check, credit card or money order), stock transfers and estate gifts.

Volunteering

The volunteers in the Eden Auxiliary perform a variety of important jobs from greeting visitors to delivering flowers and working in the gift shop. **For more information, please call the Auxiliary Office at (510) 889-5080.**

The Foundation also has a variety of volunteer opportunities available. **For more information, please call the Foundation at (510) 889-5033.**

Learn More!

To make a gift to the Eden Medical Center Foundation, please visit www.edenmedcenter.org/giving to make a donation online, or call **(510) 889-5033**.

Rehabilitation Services



Outpatient Rehabilitation Services are an integral part of the comprehensive rehabilitation services offered by Eden Medical Center, providing evidence-based treatments in occupational, physical, and speech therapy, as well as hand therapy, lymphedema services and aquatic therapy.

Outpatient Rehabilitation Facility

Eden's Outpatient Rehabilitation Facility is located at **14207 East 14th Street in San Leandro**. This location provides a full range of rehabilitation services under one roof.

Our facility offers many advantages which make your therapy experience convenient and enjoyable, including dedicated, level, wheelchair-accessible parking, extended hours from 7 a.m. to 7 p.m., and easy access from the 580/880 freeways and city streets.

Aquatic Physical Therapy and Exercise

Doing physical therapy in a heated pool enhances treatment for individuals with musculoskeletal, neuromuscular, cardiovascular and pulmonary disorders. We also offer water exercise classes for people with back pain, limited strength and mobility, and arthritis.

Hand Therapy Clinic

Certified hand therapists help patients regain function in the most complex musculoskeletal system of the body—the hands. Specialized therapy provides pain relief and improved mobility for patients who have sustained trauma or had surgery on a hand or upper extremity.

Lymphedema Services

Manual lymphatic drainage is a specialized treatment that reduces swelling that can occur following surgery or cancer treatments. Certified lymphedema therapists provide treatments, patient and family education and a personalized home maintenance program.

Swallow Therapy

Specialty programs in the evaluation and treatment of swallow disorders is provided by licensed speech and language pathologists. Interventions are designed to reduce the risk of choking or aspiration by establishing safe eating and drinking practices.





Vestibular and Balance Rehabilitation

Specially-trained physical therapists offer a movement and exercise approach to decrease or eliminate dizziness and vertigo, improve balance and tolerance to motion, and to increase activity and reduce risk for falls.

Voice Therapy

Following a physician's diagnosis of a voice disorder, the patient may be referred to a licensed speech and language pathologist for a comprehensive treatment plan to improve the quality of the patient's voice.

Wound Care/Ostomy Clinic

Whether a wound is caused by trauma, venous insufficiency, or medical condition, treatment is provided by an experienced wound care nurse or physical therapist, in consultation with physicians and other health care professionals as needed. Physician referral is required. **For more information, contact the Physical Therapy Department at (510) 889-5094.**

Eden Medical Center's Outpatient Rehabilitation Services

14207 East 14th Street
San Leandro, CA 94578
(510) 618-1800
www.edenmedcenter.org



Learn More!

For more information about physical rehabilitation, visit our extensive **Online Health Library** at www.edenmedcenter.org.



To find an Eden Medical Center physician, call **(888) 445-8433**, or visit www.edenmedcenter.org.



Psychiatric Services



Eden Medical Center provides a range of hospital-based psychiatric services that includes voluntary inpatient admission, partial hospitalization, electroconvulsive therapy and 24-hour telephonic assessment and referral for adults 18 and over. Anyone in acute psychiatric distress can be evaluated in the Emergency Department 24 hours a day, seven days a week.

Inpatient Treatment Program

The Inpatient Treatment Program is an acute, short-term program for adults at risk for suicide or bodily harm because their behavioral controls are so altered by hallucinations, delusions, impulsivity or impaired consciousness. The hospital setting allows us to treat patients with medical problems that other hospitals cannot. The program is voluntary. This means that prospective patients recognize that they are ill but also able and willing to consent to treatment of their own free will. Eden offers a safe, secure treatment experience to adults and seniors.

Partial Hospitalization

Partial Hospitalization and Intensive Outpatient are two levels of hospital-based services for adults who live at home, yet require regular psychiatric treatment, such as group psychotherapy and education, or medication management. Patients have either completed an inpatient program or are not progressing with their current supports. Support for recovery from drugs and alcohol may be included with the main focus on treatment for mental health.

Electroconvulsive Therapy (ECT)

Electroconvulsive Therapy, or “shock therapy,” is a medical treatment for severe depression when medications and other treatments have failed, or in some instances it is provided as a first line intervention.

Intake: Assessment and Referral

The Intake and Assessment and Referral telephone line is available 24 hours a day, seven days a week. For urgent calls, a pager can be activated by the caller if no one is available to answer at the time of the call.

Inpatient admissions may be arranged with a face-to-face assessment, bypassing the Emergency Department, Monday through Friday from 9 a.m. to 3 p.m. After hours and weekend admissions go through the Emergency Department, as do potential weekday admissions where there is need for medical clearance, substance intoxication or withdrawal, or when an agitated patient who would otherwise be appropriate for admission needs an emergency medication evaluation.



Learn More!

For more information about behavioral health, visit our extensive **Online Health Library** at www.edenmedcenter.org.



Referrals and inquiries are welcome from mental health professionals, physicians, prospective patients, and anyone seeking information. Please call **(510) 889-5016**.



Senior Health Services

Today's seniors are healthier and more active than ever before, and that is due in large part to the amazing advances in medicine, technology, research, as well as adults taking a more proactive role in their health and well-being. Eden Medical Center offers a variety of programs for seniors to keep them healthy and active.



Geriatric Psychiatry Services

Our experienced staff can provide the latest information and expert treatment for you or your loved ones about the specific problems related to the aging brain and body, along with social stressors that are unique to the older adult. **For more information, please call Psychiatric Services at (510) 889-5016.**

Eden Auxiliary

The volunteers in the Eden Auxiliary perform a variety of important jobs from greeting visitors to delivering flowers and working in the gift shop. We are always looking for committed and compassionate individuals who want to make a difference in other people's lives. We also have opportunities to provide family support and includes additional specialized training. **For more information, please call the Auxiliary Office at (510) 889-5080.**

EdenFit

EdenFit is a supervised exercise program ideal for those who have just completed physical or occupational therapy, cardiac or pulmonary rehabilitation, and for those with a health condition such as cardiovascular disease, obesity, high blood pressure, diabetes or arthritis. **EdenFit is located in the San Leandro Surgery Center at 15035 East 14th Street, San Leandro, CA 94578. Contact EdenFit at (510) 317-8334.**

Weekly Senior Dinner

The Valley Café at Eden Medical Center invites all seniors to join us every Thursday from 4:00-5:00 p.m. for a delicious, healthy, home cooked meal that includes choice of entrée & sides, coffee or tea, fruit or dessert, soup or salad, and dinner roll, all for a nominal cost.

Community Health Education

Eden Medical Center offers a variety of health classes for seniors throughout the year to help you understand how education and prevention of diseases play important roles in maintaining good health. **For more information about upcoming classes, please call (888) 445-8433 or visit www.edenmedcenter.org.**



Learn More!

For more information about senior health issues, visit our extensive **Online Health Library** at www.edenmedcenter.org.



To find an Eden Medical Center physician, call **(888) 445-8433**, or visit www.edenmedcenter.org.



Support Groups



At Eden Medical Center, we understand that meeting the health care needs of our community often requires more than just the diagnosis and treatment of illness and injury. We know that support and education play equally important roles in the ability of our patients and their families to understand and cope with the challenges they face. **For more information about any of our groups, please call (510) 728-1675.**

Alzheimer's Family Support

First Monday of every month, 7:00 p.m.

Breastfeeding Support Group

Tuesdays, 10:30 a.m.

Building Bridges (Cancer Support Groups)

- *Adult Bereavement – Thursdays, 5:30 - 7 p.m.*
- *Caregivers Group – Thursdays, 7 - 8:30 p.m.*
- *Breast Cancer – Thursdays, 5:30 - 7 p.m.*
- *Adult Patient Group – Thursdays, 7 - 8:30 p.m.*

Building Bridges support groups require an initial FREE assessment BEFORE joining the group. **For more information, contact Social Work Services at (510) 728-1614.**

Caregivers Support Group

Third Tuesday of every month, 7 p.m.

Depression & Bipolar Support Alliance

Fridays, 7:15 p.m.

Diabetes Support Group

Second Saturday of every month, 1 p.m.

Family Alliance for the Mentally Ill (FAMI)

Second Thursday of every month, 7:30 p.m.

Gamblers Anonymous

First or Second Sunday (varies), 4:00 p.m.

Grief Support Group

Meets for 8 weekly sessions and is not suitable for drop-ins. Please call (510) 450-8867.

HOW/OA Support (Overeaters' Anonymous)

Fridays, 7:00 p.m.

New Hope (Alcoholics Anonymous)

Fridays, 8:15 p.m.

Reflections (Alcoholics Anonymous)

Wednesdays, 7:00 p.m.

Weight Watchers Meeting

Tuesdays, 4:00 p.m.

Wellness Recovery Action Planning (WRAP)

for clients with mental illness, providers and family members

Tuesdays, 5:30 p.m.



Learn More!

For more information about your health, visit our extensive **Online Health Library** at www.edenmedcenter.org.

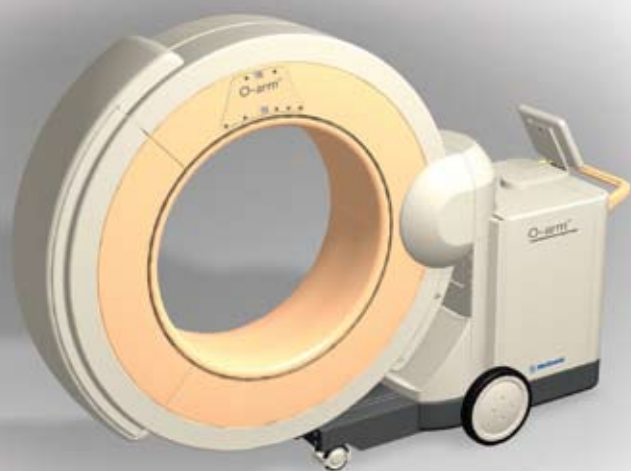


For more information about any of our support groups, visit www.edenmedcenter.org or call **(510) 728-1675**.



Surgical Services

Eden Medical Center surgeons and clinical staff utilize state-of-the-art technology to give our patients excellent care in a full range of minimally invasive surgical procedures.



O-arm® Multidimensional Imaging System

Eden Medical Center is home to one of only two revolutionary O-arm® Multidimensional Imaging Systems in the East Bay. The O-arm, along with the StealthStation Guidance System, gives the surgeon multi-dimensional imaging during the procedure. This allows precise navigation through delicate anatomy, at exactly the right angle and avoid critical structures like the spinal cord and preserve healthy tissue during surgery. For our patients, this can help minimize complication, pain, recovery time, and the need for repeat surgeries.

Minimally-Invasive Surgery

The benefits of minimally-invasive, image-guided surgery for patients are phenomenal. Minimally-invasive surgery (“laparoscopic” surgery) is performed using small incisions and specialized techniques. For our patients, this results in less trauma to the body, less blood

loss, smaller surgical scars, reduced risk of infection, less pain and quicker recovery times. Patients generally leave the hospital and return to normal activities sooner than with conventional open surgery.

The following surgical specialties are offered at Eden Medical Center:

- Breast
- Ear/Nose/Throat
- General (Abdominal)
- Gynecological
- Neurosurgery
- Ophthalmologic
- Oral/Maxillofacial
- Orthopedic
- Plastic & Reconstructive
- Podiatry
- Same Day/Ambulatory
- Spine
- Urologic
- Vascular



Learn More!

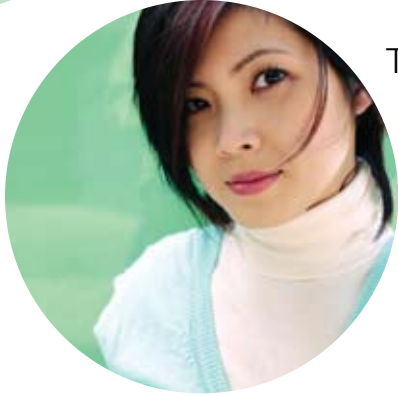
For more information about your health, visit our extensive **Online Health Library** at www.edenmedcenter.org.



To find an Eden Medical Center physician, call **(888) 445-8433**, or visit www.edenmedcenter.org.



Women's Health Services



Today's busy woman wants easy access to health care for herself and her family. Through specialized services, education, and an online health management tool, Eden Medical Center helps women be informed and proactive in their health needs.

Uterine Fibroid Embolization

Uterine fibroid embolization (UFE) is a procedure performed by a radiologist that blocks blood flow to fibroids in the uterus. Fibroids treated with this procedure shrink an average of 48% to 78%. For women who are not planning a pregnancy in the future, UFE is a possible alternative to surgery for fibroids. **For more information about UFE, please call (888) 445-8433.**

Digital Mammography

Eden Medical Center is an ACR (American College of Radiology) Breast Imaging Center of Excellence and has FDA-approved full field digital mammography with Computer Aided Detection (CAD).

A mammogram is done to help screen or diagnose breast cancer. Many small tumors can be seen on a mammogram before a woman or her doctor can feel them. Cancer is most easily treated and cured when it is discovered in an early stage.

Many organizations, such as the American Cancer Society and the American College of Radiologists, recommend mammograms every year for women beginning at age 40. **Women should obtain a doctor's order first, then make an appointment by calling the Imaging Center at (510) 889-5044.**

MyLifeStages

MyLifeStages is an innovative Sutter Health program for women designed to give women the information and tools you want so that you can be active and healthy through each stage of life. We've pulled together a full featured set of helpful life tools like interactive to-do lists, calendars, personalized health reports, customizable medical information and local experts, all in one great, secure place. **To join in—membership is free—just go to www.mylifestages.org.**

Women's Health Symposium

This annual event features our physicians and other clinical professionals discussing the latest news and medical breakthroughs in women's health. Visit our Web site for announcement of the next symposium.



Learn More!

For more information about women's health issues, visit our extensive **Online Health Library** at www.edenmedcenter.org.



To find an Eden Medical Center physician, call **(888) 445-8433**, or visit www.edenmedcenter.org.



Physician Roster

Medical excellence and compassionate patient care start with our doctors. The medical staff at Eden Medical Center is comprised of more than 500 physicians representing nearly every specialty to provide outstanding health care for you and your family.

To find a doctor that's right for you, please call (888) 445-8433 or visit www.edenmedcenter.org.



Anesthesiology

David K. Black, M.D.
Steven Brauser, M.D.
Penna K. Bui, M.D.
Chante S. Buntin, M.D.
Jaiyong Choi, M.D.
Jeffrey M.T. Do, M.D.
Warren L. Gee, M.D.
Lawrence Holm, M.D.
Fedor Logvin, M.D.
Charles E. Lopez, M.D.
Steven J. Mandelberg, M.D.
Francisco C. Rico, M.D.
James Shu, M.D.
Marina Swee, D.O.
Yolanda Q. Tam, M.D.
Mark L. Tidyman, M.D.
Phuong Dai H. Vo, M.D.
Fair H. Wang, M.D.
Manik N. Wijesinghe, M.D.
Xiaoning "Stan" Zhou, M.D.

Cardiology

Nabil K. Abudayeh, M.D.
Zulfiqar Ali, M.D.
David J. Anderson, M.D.
John H. Chiu, M.D.
George D. Cowen, M.D.
Denis W. Drew, M.D.
Susan C. Eile, M.D.
Robert C. Feldman, M.D.
Robert E. Gwynn, M.D.
General K. Hilliard, M.D.
Adil N. Irani, M.D.
Aditya A. Jain, M.D.
Ashit Jain, M.D.
Eric L. Johnson, M.D.
Steven Kang, M.D.
Alexander Kopelnik, M.D.
Michael A. Lee, M.D.

Paul Ludmer, M.D.
Thomas G. Quinn, M.D.
Thirupathi Reddy, M.D.
Richard W. Terry, M.D.
Jeffrey A. West, M.D.
Gary R. Woodworth, M.D.

Critical Care

Gordana Bjekic, M.D.
Christopher R. Brown, M.D.
Tze-Ming (Benson) Chen, M.D.
Lawrence A. Coskey, M.D.
Frank M. Delen, M.D.
Ralph E. DiLisio, M.D.
Ron B. Elkin, M.D.
Mehran Farid-Moayer, M.D.
Sherfong Gee, D.O.
James K. Gude, M.D.
James J. Hershon, M.D.
Donald Ho, M.D.
George S. Horng, M.D.
Robert Murray Jasmer, M.D.
Bunchong Kosolcharoen, M.D.
Kristina M. Kury, M.D.
Sunye Kwack, M.D.
Kenneth C. Lamb, M.D.
Guy S. Livnat, M.D.
James McFeely IV, M.D.
Robert L. Newbury, M.D.
Merrill R. Nisam, M.D.
Thomas J. Nuckton, M.D.
Glen W. Petersen, M.D.
Thomas E. Shaughnessy, M.D.
James M. Steele, M.D.
Bernard J. Steyer, M.D.

Dermatology

William Chow, D.O.
John D. Doux, M.D.
Herbert A. Holman, M.D.
John W. Weiss, M.D.

Ear, Nose, Throat

Sassan Falsafi, M.D.
Zev M. Kahn, M.D.
Adam H. Marvin, M.D.
James W. Miller, M.D.
Ronald Rubenstein, M.D.
Robert Kai Wu, M.D.
Mark Zeme, M.D.

Emergency Medicine

William H. Birdsong, M.D.
Barbara L. Bond, M.D.
John J. Boright, M.D.
Merrill A. Chandler, M.D.
Joel Chiu, M.D.
David E. Dallafior, M.D.
Ralph J. D'Amato, M.D.
Rogelio S. Dawkins, M.D.
Dwight D. Gaggero, M.D.
Alan R. Gottlieb, M.D.
James C. Hardy, M.D.
Travis M. Harris, M.D.
Gail A. Hubbell, M.D.
Peter G. Joseph, M.D.
Brian J. Kaminski, M.D.
James K. Keaney, M.D.
Kenneth S. Kumamoto, M.D.
Tatiana M. Mamantov, M.D.
Ben E. Meek, M.D.
Anthony M. Montefusco, M.D.
Rochelle A. Philapil, M.D.
Celeste M. Scanlon, M.D.
H. David Schneider, M.D.
Sushma V. Shah, M.D.
Jeremy Tillim, M.D.
Evan T. Wythe, M.D.

Endocrinology

Frank Hsu, M.D.

Family Medicine

Daniel C. Anderson, M.D.
Russell L. Blackburn, M.D.
Christi C. Cheng, M.D.
Michael D. DeLange, M.D.
Jessica A. Evert, M.D.
Jaya Karnani, M.D.
Alan M. Linder, M.D.
Jeffrey A. Mandel, M.D.
Daisy Maron, M.D.
Gregory J. Martin, M.D.
Arkady Massen, M.D.
Safa Nsouli, M.D.
Michael T. O'Brien, M.D.
Scott J. Petersen, M.D.
Anna A. Petrova, M.D.
Razia A. Rangwala, M.D.
Bruce A. Robertson, M.D.
Paul Justin Robinson, D.O.
Kenneth L. Rothman, M.D.
Samir Sairam, M.D.
Amita Sharma, M.D.
John J. Smucny, M.D.
Parviz Sagheb Talebi, M.D.
John Turns, M.D.
Jane Wardzinska, M.D.
Herbert Weingard, M.D.
Ting Wu, M.D.
Dariush Zandi, M.D.
Douglas D. Zhang, M.D.

Gastroenterology

Miles F. Adler, M.D.
Bhupinder N. Bhandari, M.D.
Peter Hooberman, M.D.
Wei-Fang J. Ko, M.D.
Stephen M. Lee, M.D.
Vin Sawhney, M.D.
S. Saeed Zamani, M.D.

General Surgery

Garfield D. Bryant, M.D.
Edward M. Chan, M.D.
Chuc Van Dang, M.D.
Jay Garfinkle, M.D.
Louise Hom, M.D.
Sara J. Reinganum, M.D.
Aguedo A. Retodo, M.D.
Donato J. Stingham, M.D.
Christopher N. Traver, M.D.
Brian K. Walker, M.D.

Gynecologic Oncology

Margrit M. Juretzka, M.D.
Jeffrey L. Stern, M.D.

Hematology/ Oncology

Ravi Arora, M.D.
Elwyn C. Cabebe, M.D.
Jeffrey W. Cronk, M.D.
Ricardo DaRoza, M.D.
John T. Ganey, M.D.
Tyler Kang, M.D.
Shoba Kankipati, M.D.
Jelena M. Kao, M.D.
Ostap G. Melnyk, M.D.
Bimal J. Patel, M.D.
Sunil A. Reddy, M.D.
Ahmed K. Sadiq, M.D.
Rishi Sawhney, M.D.
Vandana Sharma, M.D.
Joseph Szumowski, M.D.
Melinda L. Telli, M.D.
Byron E. Wilson, M.D.
Peter P. Wong, M.D.

Infectious Disease

Mark Kim Lee, M.D.
Joseph Marzouk, M.D.
Steven Oppenheimer, M.D.
Roger Phelps, M.D.
Bakul T. Roy, M.D.
Jeffrey H. Silvers, M.D.
Steven R. Una, M.D.
Benedict C. Villanueva, M.D.

Internal Medicine

Sonal J. Advani, M.D.
Nail Amro, M.D.
Robert E. Anderson, M.D.
Arash Babaki, M.D.
Jyothi Bachwani, M.D.

Eugenio L. Balbuena, M.D.
Kim B. Benson, M.D.
Joanne A. DePhillips, M.D.
Deepak Dhawan, M.D.
Zarlasht Fakiri, D.O.
Arash Foroutani, M.D.
Anita C. Gaind, M.D.
Francis E. Garriott, M.D.
Laszlo Hites, M.D.
Chao Ho, M.D.
Richard Ho, M.D.
Kathryn K. Hodge, M.D.
Samir S. Kadada, M.D.
Kaarel T. Kaljot, M.D.
Tehmina Kanwal, M.D.
Fatma S. Khakoo, M.D.
Donald R. Knotts, M.D.
Eric S. Kohleriter, M.D.
Erwin Kuo, M.D.
Padmavathi Madathanapalli, M.D.
Jhansi Menon, M.D.
Kuntal P. Mohare, M.D.
Khashayar Montazeri, M.D.
Laurie T. Nakahira, D.O.
Minh H. Nguyen, M.D.
Sarah B. Noonberg, M.D.
Uchenna A. Okoronkwo, M.D.
Tianli Pan, M.D.
Kavita Patankar, M.D.
Catherine Pyun, D.O.
Sindhu Radhakrishnan, M.D.
Anupama T. Raikanti, M.D.
Steven J. Rosenthal, M.D.
Harley Schultz, M.D.
Maina R. Shetty, M.D.
Yinyu Tang, M.D.
Vladimir Alex Titov, M.D.
Petr Utrata, M.D.
Steven Verbinski, M.D.
Ling Xu, M.D.
James Yeh, D.O.

Neonatology

Stacie C. Bennett, M.D.
Margarita Berrios, M.D.
Arthur E. D'Harlingue, M.D.
Golde Dudell, M.D.
David J. Durand, M.D.
Alex M. Espinoza, M.D.
Thomas K. Eusterbrock, M.D.
Kristin E. Hubert, M.D.
Priscilla Joe, M.D.
Lily C. Kao, M.D.
Jennifer A. Levy, M.D.
Jeffrey D. Merrill, M.D.
Nick A. Mickas, M.D.

William I. Murphy, M.D.
Amarjit S. Sandhu, M.D.
Charles B. Scott, M.D.
Jaime E. Tannenbaum, M.D.
Anna G. Usowicz, M.D.
Hui-Hsin Faith Wu, M.D.

Nephrology

Archana Aggarwal, M.D.
Hamoudi A. Al-Bander, M.D.
Haseeb Al-Mufti, M.D.
Anita M. Carstensen, M.D.
Qi Che, M.D.
Yvonne Chen, M.D.
Catherine M. Covey, M.D.
Ole Dierks, M.D.
Chaplin L. Liu, M.D.
Cynthia A. Mahoney, M.D.
Leena K. Mehandru, M.D.
Richard E. Oliver, M.D.
Rahul Rishi, M.D.

Neurology

David C. Bonovich, M.D.
Vasiliki Economou, M.D.
Barry S. Mann, M.D.

Obstetrics & Gynecology

Kala Chandler, M.D.
Leslie Hardy Hood, M.D.
Melissa A. Johnson, M.D.
Marion Kramer, M.D.
Helen E. Matthews, M.D.
Michael J. McGlynn, Jr., M.D.
Andrea R. Mendelssohn, M.D.
Rama D. Polissetty, M.D.
John F. Polito, M.D.
Rahmat Salimi, M.D.
Anna Maria V. Sapugay, M.D.
Nancy J. Solh, M.D.
Sheri L. Task, M.D.
Suman P. Veeragandham, M.D.
Nancy H. Wigginton, M.D.
Benjamin Wolsztein, M.D.

Pediatric Allergy

Paul Cheng, M.D.
Dionisio A. Fernandes, M.D.

Pediatric Cardiology

Kishor Avasarala, M.D.
Gregory H.T. Kurio, M.D.

Andrew James Maxwell, M.D.
Ziad S. Saba, M.D.

Pediatrics

Eloa S. Adams, M.D.
Sean J. Gamble, M.D.
Kara M. Hutton, M.D.
Jeanie Kim, M.D.
Taizo A. Nakano, M.D.
Tim Nicholls, M.D.
Kai L. Ouye, M.D.
Josephine A. Roen, M.D.
Charles J. Ruhlin, M.D.
Marcella Spera, M.D.
Tammy N. Wang, M.D.
Laura Elizabeth Balestreri, M.D.
Maria E. Beamer, M.D.
Jennifer S. Betz, M.D.
Arnold J. Blustein, M.D.
Yasmin H. Carim, M.D.
Patricia Chiang, M.D.
Laura B. Denenberg, M.D.
Kenneth L. Ducker, M.D.
Darcy E. Grant, M.D.
Laura Grunbaum, M.D.
Mika Hiramatsu, M.D.
Neil Hoglund, M.D.
Carolyn E. Hudson, M.D.
Frederick L. Humeston, M.D.
Jerrilyn Johnston, M.D.
Shirley T. Lau, M.D.
Amy M. Maidenberg, M.D.
John E. Nackley, M.D.
Lawrence M. Ng, M.D.
Lilia R. Ocegüera, M.D.
Melinda Lee Ragins, M.D.
Kasthuri S. Rajaram, M.D.
Miriam M. Rhew, M.D.
Misha G. Roitshteyn, M.D.
Willie V. Ross, M.D.
Laura E. Saldivar, M.D.
Stephen A. Santucci, M.D.
Donald M. Selcer, M.D.
Michael N. Usem, M.D.
Caren A. Vance, M.D.
Eric D. Wells, M.D.
Li Zhu, M.D.

Physical Medicine & Rehabilitation

David C. Bradshaw, M.D.
Marina V. Bulatov, M.D.
Kenneth B. Fechtner, M.D.
Herbert Goodman, M.D.
Eduardo I. Lin, M.D.
Jill Dougal MacKinnon, M.D.

Kishore B. Narra, M.D.
David K. Padgett, D.O.

Psychiatry

Akbar Gilani, M.D.
Arkady Oreper, M.D.
Thomas R. Powers, M.D.
Boris Zhalkovsky, M.D.

Pulmonology

Laurence Athos, M.D.
Ratnasothy S. Rajah, M.D.
Navdeep Singh, M.D.
Bobbak Vahid, M.D.
T. Craig Williams, M.D.
Raafat K. Zamary, M.D.

Radiation Oncology

Ranu Bahl, M.D.
Joseph C. Beck, M.D.
Michael R. Forrest, M.D.
Steven Kurtzman, M.D.
Rakesh R. Patel, M.D.
Robert Sinha, M.D.
Carl Van Wey, M.D.

Rheumatology

Rashmi B. Dixit, M.D.
Rajiv K. Dixit, M.D.
Zuzana Foster, M.D.
John M. Loeb, M.D.
C. Michael Neuwelt, M.D.
Anthony S. Padula, M.D.
David W. Wu, M.D.

Neurosurgery

Lawrence D. Dickinson, M.D.
Ronnie I. Mimran, M.D.
Jeffrey B. Randall, M.D.
Michael A. Sheinberg, M.D.

Ophthalmology

Diane C. Albracht, M.D.
Shirin Barez, M.D.
V. Nicholas Batra, M.D.
Sophia T. Chen, M.D.
Stewart A. Daniels, M.D.
Christopher M. DeBacker, M.D.
Robert Edelman, M.D.
Patricia S.Y. Ferrell, M.D.
Leonard P. Goldschmidt, M.D.
Craig J. Leong, M.D.
Mark R. Mandel, M.D.
Maskeen Sabharwal, M.D.
James J. Song, M.D.

T. Daniel Ting, M.D.
Stephen Turner, M.D.

Oral/Maxillofacial Surgery

Jeffrey R. Clayton, D.D.S.
James Mossop, D.D.S.
Casey K. Shimane, D.D.S.
Ron G. Takahashi, D.D.S.
Jerry L. Wang, DDSMD

Orthopedic Surgery

Douglas J. Abeles, M.D.
Clarence A. Boyd, M.D.
Joseph C. Cheng, M.D.
R. Scott Forster, M.D.
Darrell Hayes, M.D.
Michael B. Krinsky, M.D.
William F. Lichtman, M.D.
Robert E. Martin, M.D.
Gregg T. Pottorff, M.D.
Donald W. Rohren, M.D.
Martha Singer, M.D.
Andrew J. Stein, M.D.
Eric S. Stuffmann, M.D.
William F. West, M.D.

Pain Management

William H. Baumgartl, M.D.
Paul E. Gillbanks, M.D.
Navin A. Mallavaram, M.D.
Gayle Misle, M.D.
Ravi S. Panjabi, M.D.
Toufan Razi, M.D.

Pathology

Seta A. Bedrosian, M.D.
Jerome S. Burke, M.D.
Lorelle E. Carley, M.D.
John D. Carney, M.D.
James G. Collins, M.D.
Albert J. Filice, M.D.
Nupoor A. Gajjar, M.D.
Wayne L. Garrett, D.O.
Debra Gologorsky, M.D.
Richard H. Hildebrandt, M.D.
Louis E. Komarmy, M.D.
Maggie M. Lam, M.D.
Kenneth J. Leipper, M.D.
Maria-Laura Mancianti, M.D.
Jianqiu Pan, M.D.
Annette M. Shaieb, M.D.
Allison J. Shaw, M.D.
Rebecca S. Swain, M.D.

Plastic Surgery

Daniel B. Allen, M.D.
Stanley I. Hegg, M.D.
Ronald E. Iverson, M.D.
Victoria Sheue-Yi Pao, M.D.

Podiatric Surgery

Lisa Breuner, D.P.M.
Alison Jo Cook, D.P.M.
Ronald A. Hull, D.P.M.
William J. Lehrich, D.P.M.
Christopher Mah, D.P.M.
Carolyn E. McAloon, D.P.M.
Eric W. Nelson, D.P.M.
Naleen L. Prasad, D.P.M.
Alexander M. Reyzelman, D.P.M.
Steven I. Subotnick, D.P.M.
Douglas M. Taylor, D.P.M.
Peter A. Ternus, D.P.M.

Psychology

Brent A. Hughey, Ph.D.
James W. Kurkjian, Ph.D.
Kirsten T. Severson, Ph.D.
Suzanne G. Sloman, Ph.D.

Radiology

Eric Bain, M.D.
Richard B. Baxter, M.D.
Robert J. Binder, M.D.
Kimberly M. Blumberg, M.D.
Richard J. Brenner, M.D.
Jimmy D. Cardoza, M.D.
Joseph J. Chan, M.D.
Royce A. Chrys, M.D.
Angelo S. Crudale, M.D.
L. Evan Custer, M.D.
Eric A. Dovichi, M.D.
Ira J. Finch, M.D.
Ying Fung, M.D.
Erik H.L. Gaensler, M.D.
David J. Goldberg, M.D.
Mark S. Goldsmith, M.D.
Stephen M. Hesseltine, M.D.
Tom Joseph, M.D.
Robert Y. Kim, M.D.
Annie P. Lai, M.D.
Scott A. Lipson, M.D.
Daniel E. Lucas, M.D.
Norman P. Moscow, M.D.
Sundeep Nayak, M.D.
Keyvan J. Nouri, M.D.
Ronald R. Olson, M.D.
Robert H. Shimshak, M.D.
Christopher D. Tran, M.D.

Mark K. Tu, M.D.
Phillip C. Wong, M.D.
David Woo, M.D.

Teleradiology

Ronald Shek Chan, M.D.
Ruby Chang, M.D.
Samuel Choi, M.D.
Barry L. Engelstad, M.D.
Jacob A. Epstein, M.D.
Sunil N. Gandhi, M.D.
William K. Hoddick, M.D.
David S. Howard, M.D.
Edward M. Miller, M.D.
Saurabh "Sam" K. Patel, M.D.
Jonathan P. Posin, M.D.
Aseem Om Rawal, M.D.
Joan Reynolds, M.D.
Marsha D. Roberts, M.D.
Robert M. Schick, M.D.
Richard M. Sigel, M.D.
Kirk Chottanapund So, M.D.
Vivian W. Wing, M.D.
David Wixson, M.D.

Trauma Surgery

Noor S. Azimi, M.D.
James T. Badger, M.D.
Scott Wald Benninghoven, M.D.
Refugio C. Gonzalez, M.D.
Michael C. Gynn, M.D.
James G. Hinsdale, M.D.
Richard A. Kline, M.D.
Carolyn M. Lobo, M.D.
Haroon M. Mojaddidi, M.D.
Richard L. Schnabel, M.D.
R. Scott Snyder, M.D.

Urology

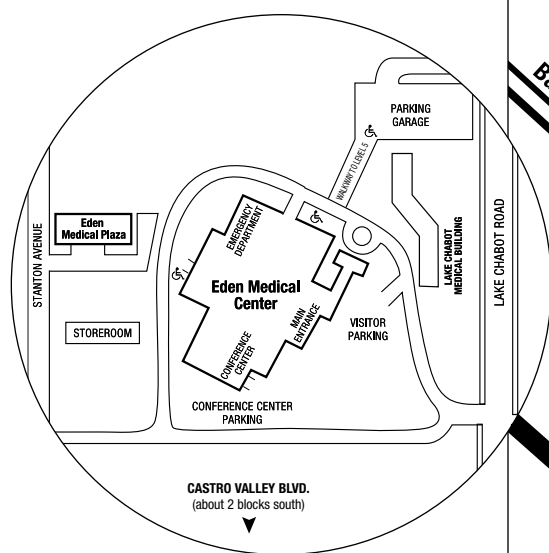
Ray V. Bulusu, M.D.
Sourjya P. Misra, M.D.
Michael E. Nickas, M.D.
Roland Wong, M.D.

Vascular Surgery

Robert Gingery, M.D.
Michael D. Ingegno, M.D.
Arnold W. Levine, M.D.
Raveendra R. Nadaraja, M.D.
Lamont D. Paxton, M.D.

Map and Directions

Eden Medical Center
20103 Lake Chabot Road
Castro Valley, CA 94546



Directions

Eastbound 580 from Oakland/Berkeley:
Take the Stobridge Avenue exit. Turn left at the light. Turn right onto Castro Valley Boulevard. Turn left onto Lake Chabot Road. Hospital is on the left.

Westbound 580 from Pleasanton/Tri-Valley:
Take the Stobridge Avenue exit. Turn right at the stop sign. Turn right onto Castro Valley Boulevard. Turn left onto Lake Chabot Road. Hospital is on the left.

North or South I-880:
Take Hwy 238 East exit toward 580/Oakland/Stockton. Take the Castro Valley exit from 238. Turn left at the light. Turn left onto Lake Chabot Road. Hospital is on the left.

Parking

Patients and visitors may park for free in the lots in front of the hospital, or in the parking garage. Levels 1 and 5 of the garage are designated for visitor parking and a walkway to the hospital can be accessed from the 5th Floor.

Public Transportation

BART: The Castro Valley BART Station, on the Pleasanton/Dublin line, is located at 3301 Norbridge Drive in Castro Valley. For schedule information, visit www.bart.gov

AC Transit: AC Transit bus lines that run to or near Eden Medical Center include Line 87, Line 80 from San Leandro, and Line 84. For more information, visit www.actransit.org.

Sutter Medical Center Castro Valley

Our vision is to create an extraordinary landmark medical center that integrates advanced technology, quality medical care, and outstanding physicians and employees to provide the best care for our patients and community.



At A Glance

- 130 acute care beds and 34-bed Universal Care Service
- All private rooms
- Patient-centered registration and services
- Emergency Department and Trauma Center
- Urgent Care Center
- OB/Maternity Services
- Neurosciences
- 230,000 square foot hospital and 80,000 square foot medical office building

Next Generation Hospital

Sutter Health is committed to building the next generation hospital to meet the health care needs of the residents of Castro Valley, Hayward, San Leandro, San Lorenzo and surrounding communities. California's stringent earthquake standards have given us an opportunity to build an extraordinary medical center, with these fundamental goals:

- Create a safe, healing environment
- Ensure accessible, affordable healthcare in our community
- Improve care with the most sophisticated technologies and innovative designs
- Keep the existing hospital fully operational during construction
- Construct a high-performing, sustainable green building

This \$320 million project includes the construction of a state-of-the-art hospital on the Eden Medical Center campus, campus improvements including additional parking, and the

deconstruction and recycling of the old hospital once the new hospital is complete.

The project is funded by Sutter Health and scheduled to open in 2013. This is the first, comprehensive hospital rebuilding plan in Alameda County that is financed without taxpayer support or public funds.



Learn More!

For news, updates, live webcam, information and blogs about the new hospital, visit us at www.sutter-medicalcentercastrovalley.org.

Follow us on Facebook and Twitter

[facebook](#)

[twitter](#)



To contact us, please call **(510) 727-8280** or e-mail ClarkCJ@sutterhealth.org



Eden Medical Center

A Sutter Health Affiliate

20103 Lake Chabot Road
Castro Valley, CA 94546

www.edenmedcenter.org



Visit www.edenmedcenter.org for the latest news from Eden Medical Center, access to an extensive health library, details about our programs and services, and information about upcoming classes and events.